

Dimension Handbook

PN-type

20" (500mm) ~60" (1500mm)

CONTENTS

PN-Pipes

Appendix Table 8 PN-Pipes (DN20” ~DN60”) 1

Appendix Table 9 PN-Pipes (DN20” ~DN60”) 3

Appendix Table 10 PN-Pipes (DN20” ~DN60”) 5

PN-Fittings

Appendix Table 11 PN-Fittings (DN20” ~DN44”) 6

Appendix Table 12 PN-Fittings (DN28” ~DN60”) 8

PN-Socket Spigot Pipes(PN - NS)

Appendix Table 13 PN -Socket Spigot Pipes(PN - NS) 9

Appendix Table 14 PN -Socket Spigot Pipes(PN - UF) 10

Appendix Table 15 PN -Socket Spigot Pipes(PN - S) 11

Appendix Table 16 PN -Socket Spigot Pipes(PN - K) 12

PN-Tees with flanged branch

Appendix Table 17 PN - Tees with flanged branch 13

PN-Collars

Appendix Table 18 PN - Collars 14

PN-Double Flanged Pipes

Appendix Table 19 PN - Double Flanged Pipes 15
(For Tees with Flanged Branch)

PN-Double Flanged Tapers

Appendix Table 20 PN - Double Flanged Tapers 16
(For Tees with Flanged Branch)

PN-Accessories

Appendix Table 21 PN - Accessories(1) 17

Appendix Table 22 PN - Accessories(2) 19

CONTENTS

PN-Pipes (CP Method)

Appendix Table 23 PN-Pipes(CP Method) (DN28” ~DN60”) 21

PN-Fittings

Appendix Table 24 PN- Fittings (CP Method) (For Socket Spigot Pipes) ... 23
(DN28” ~DN44”)

Appendix Table 25 PN- Fittings (CP Method) (For Bend and Collars) 24
(DN28” ~DN60’)

Appendix Table 26 PN- Socket Spigot Pipes (CP Method) (PN-NS) 25
(DN28” ~DN40’)

Appendix Table 27 PN- Socket Spigot Pipes (CP Method) (PN-UF) 26
(DN32” ~DN44’)

Appendix Table 28 PN- Socket Spigot Pipes (CP Method) (PN-S) 27
(DN44’)

Appendix Table 29 PN- Socket Spigot Pipes (CP Method) (PN-K) 28
(DN28” ~DN44’)

Appendix Table 30 PN- Socket Spigot Bends (CP Method) 29

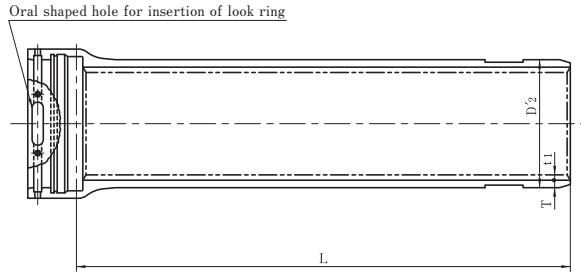
Appendix Table 31 PN- Collars (CP Method) (DN28” ~DN60’) 31

PN-Accessories

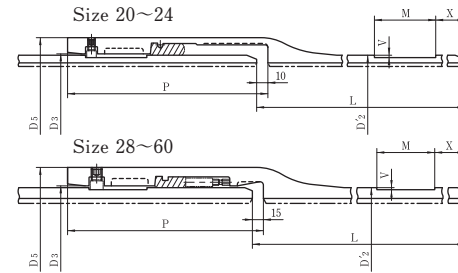
Appendix Table 32 PN - Accessories(1) 32
(Gland, Bolts, RuberGasket)

Appendix Table 33 PN - Accessories(2) 34
(Lock Ring (CP Method))

Appendix Table 8 PN-Pipes



PN-Pipes

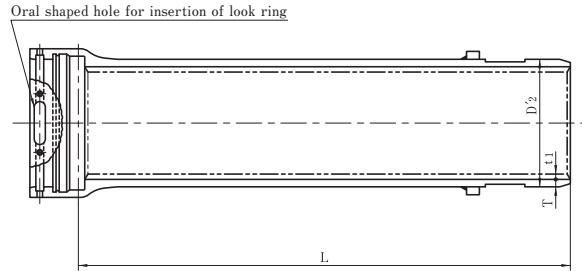


PN

DN (Inches)	Wall Thickness(Inches)				Outside Diameter (Inches)	Dimensions(Inches)							Nominal laying length (feet)	Socket projection
	T					D ₂	D ₃	D ₅	M	P	V	X		
D	D 1	D 2	D 3	D 4	D ₂	D ₃	D ₅	M	P	V	X	L	Socket projection	
20	0.37	0.33	0.31	—	20.00	20.14	21.97	2.56	9.65	0.10	5.43	13.12 19.96	117.3	
24	0.43	0.39	0.35	0.33	24.00	24.14	26.05	2.56	9.96	0.10	5.43	13.12 19.96	155.0	
28	0.47	0.43	0.39	0.35	28.00	28.16	29.89	2.76	9.96	0.10	5.12	13.12 19.96	180.1	
32	0.53	0.47	0.43	0.39	32.00	32.16	33.97	2.95	10.43	0.10	5.12	13.12 19.96	224.9	
36	0.59	0.51	0.47	0.43	36.00	36.16	38.05	3.15	10.83	0.10	5.31	13.12 19.96	280.0	
40	0.65	0.57	0.51	0.47	40.00	40.16	42.13	3.15	10.83	0.10	5.31	13.12 19.96	328.5	
44	0.71	0.61	0.55	0.51	44.00	44.16	46.20	3.35	11.34	0.12	5.31	13.12 19.96	390.2	
48	0.77	0.67	0.59	0.53	49.06	49.21	51.34	3.54	11.73	0.12	5.51	13.12 19.96	476.2	
54	0.85	0.73	0.65	0.59	55.12	55.28	57.52	3.54	11.73	0.12	5.51	13.12 19.96	573.2	
60	0.93	0.81	0.71	0.65	61.18	61.34	63.78	3.54	11.73	0.12	5.51	13.12 19.96	707.7	

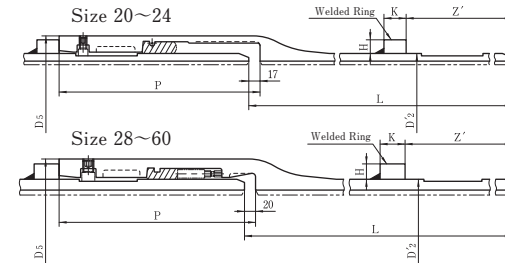
Spigot groove	Mass(lb)								Lining			DN (Inches)
	Per 1 foot				Per 1 Piece				Thickness (Inches)	Mass(lb)		
	D 1	D 2	D 3	D 4	D 1	D 2	D 3	D 4		t 1	Per 1 foot	Per 1 Piece
-4.08	234.5	210.3	198.1	—	1049	952.4	903.9	—	0.24	48.2	192.2	20
					1519	1373	1300	—	0.24	48.2	288.8	
-4.89	326.1	296.9	267.7	253.0	1450	1333	1219	1159	0.24	58.0	231.5	24
					2103	1929	1752	1666	0.24	58.0	348.3	
-6.15	415.5	381.4	347.2	313.0	1829	1693	1558	1422	0.31	90.3	359.3	28
					2667	2447	2248	2048	0.31	90.3	540.1	
-7.52	534.3	475.9	436.8	397.6	2336	2114	1957	1801	0.31	103.4	412.3	32
					3417	3064	2821	2601	0.31	103.4	619.5	
-9.04	668.1	580.3	536.2	492.1	2932	2579	2403	2226	0.31	116.5	465.2	36
					4276	3747	3483	3218	0.31	116.5	696.6	
-10.03	816.7	719.1	645.7	596.6	3571	3174	2888	2689	0.39	161.7	643.7	40
					5202	4629	4188	3880	0.39	161.7	967.8	
-14.07	980.1	845.9	765.1	711.1	4276	3747	3417	3218	0.39	178.1	709.9	44
					6239	5445	4960	4629	0.39	178.1	1067	
-16.62	1184	1034	914.4	824.0	5180	4585	4100	3747	0.39	199.0	793.7	48
					7539	6657	5930	5401	0.39	199.0	1190	
-18.67	1467	1265	1130	1028	6393	5599	5048	4651	0.47	268.3	1069	54
					9347	8134	7319	6701	0.47	268.3	1604	
-20.75	1781	1556	1369	1256	7782	6900	6150	5687	0.47	298.2	1188	60
					11353	10008	8884	8201	0.47	298.2	1785	

Appendix Table 9 PN-Pipes



DN (Inches)	Wall Thickness(Inches)				Outside Diameter (Inches)	Dimensions(Inches)					Nominal laying length (feet)
	T					D ₂	D ₃	H	K	P	
D	D 1	D 2	D 3	D 4							
20	0.37	0.33	0.31	—	20.00	21.97	0.75	0.98	9.65	8.98	13.12 19.96
24	0.43	0.39	0.35	0.33	24.00	26.05	0.75	1.50	9.96	9.29	13.12 19.96
28	0.47	0.43	0.39	0.35	28.00	29.89	0.75	1.50	9.96	9.17	13.12 19.96
32	0.53	0.47	0.43	0.39	32.00	33.97	0.87	1.50	10.43	9.65	13.12 19.96
36	0.59	0.51	0.47	0.43	36.00	38.05	0.87	2.52	10.83	10.04	13.12 19.96
40	0.65	0.57	0.51	0.47	40.00	42.13	0.87	2.52	10.83	10.04	13.12 19.96
44	0.71	0.61	0.55	0.51	44.00	46.20	0.98	2.52	11.34	10.55	13.12 19.96
48	0.77	0.67	0.59	0.53	49.06	51.34	0.98	2.52	11.73	10.94	13.12 19.96
54	0.85	0.73	0.65	0.59	55.12	57.52	0.98	2.52	11.73	10.94	13.12 19.96
60	0.93	0.81	0.71	0.65	61.18	63.78	0.98	2.52	11.73	10.94	13.12 19.96

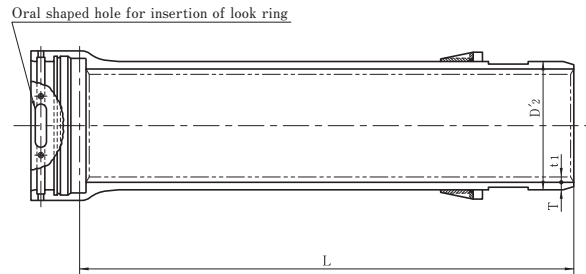
PN-Pipes (with welded ring)



Socket projection	Spigot groove	Mass(lb)				Welded Ring	Lining		DN (Inches)
		D 1	D 2	D 3	D 4		Thickness (Inches) t1	Mass(lb)	
117.3	-4.08	1049	952.4	903.9	—	13.6	0.24	192.2	20
		1519	1373	1300	—		0.24	288.8	
155.0	-4.89	1450	1333	1219	1159	24.7	0.24	231.5	24
		2103	1929	1752	1666		0.24	348.3	
180.1	-6.15	1829	1693	1558	1422	28.7	0.31	359.3	28
		2667	2447	2248	2048		0.31	540.1	
224.9	-7.52	2336	2114	1957	1801	37.9	0.31	412.3	32
		3417	3064	2821	2601		0.31	619.5	
280.0	-9.04	2932	2579	2403	2226	71.6	0.31	465.2	36
		4276	3747	3483	3218		0.31	696.6	
328.5	-10.03	3571	3174	2888	2689	79.4	0.39	643.7	40
		5202	4629	4188	3880		0.39	967.8	
390.2	-14.07	4276	3747	3417	3218	99.4	0.39	709.9	44
		6239	5445	4960	4629		0.39	1067	
476.2	-16.62	5180	4585	4100	3747	110.7	0.39	793.7	48
		7539	6657	5930	5401		0.39	1190	
573.2	-18.67	6393	5599	5048	4651	123.9	0.47	1069	54
		9347	8134	7319	6701		0.47	1604	
707.7	-20.75	7782	6900	6150	5687	137.3	0.47	1188	60
		11353	10008	8884	8201		0.47	1785	

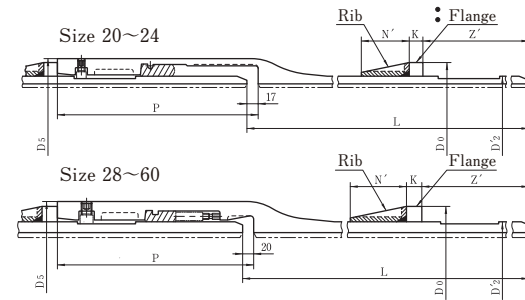
PN

Appendix Table 10 PN-Pipes



DN (Inches)	Wall Thickness(Inches)				Outside Diameter (Inches)	Dimensions(Inches)							Nominal laying length (feet)
	T					D ₂	D ₀	D ₅	K	N'	P	Z'	
D	D 1	D 2	D 3	D 4	D ₂								D ₀
20	0.37	0.33	0.31	—	20.00	21.69	21.97	0.63	3.54	9.65	8.98	13.12 19.96	
24	0.43	0.39	0.35	0.33	24.00	25.75	26.05	0.63	3.54	9.96	9.29	13.12 19.96	
28	0.47	0.43	0.39	0.35	28.00	29.61	29.89	0.75	5.51	9.96	9.17	13.12 19.96	
32	0.53	0.47	0.43	0.39	32.00	33.66	33.97	0.75	5.51	10.43	9.65	13.12 19.96	
36	0.59	0.51	0.47	0.43	36.00	37.76	38.05	0.75	5.51	10.83	10.04	13.12 19.96	
40	0.65	0.57	0.51	0.47	40.00	41.77	42.13	0.98	5.51	10.83	10.04	13.12 19.96	
44	0.71	0.61	0.55	0.51	44.00	45.87	46.20	0.98	5.51	11.34	10.55	13.12 19.96	
48	0.77	0.67	0.59	0.53	49.06	50.98	51.34	0.98	5.51	11.73	10.94	13.12 19.96	
54	0.85	0.73	0.65	0.59	55.12	57.17	57.52	0.98	5.51	11.73	10.94	13.12 19.96	
60	0.93	0.81	0.71	0.65	61.18	63.50	63.78	1.10	5.91	11.73	10.94	13.12 19.96	

PN-Pipes (with flange and ribs)



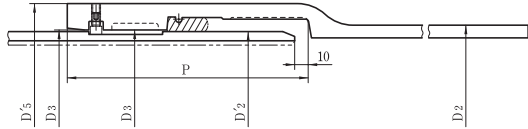
Socket projection	Spigot groove	Mass(lb)				Flange and Ribs	Lining		DN (Inches)
		Per 1 Piece					Thickness (Inches) t1	Mass(lb)	
		D 1	D 2	D 3	D 4				
117.3	-4.08	1049	952.4	903.9	—	14.5	0.24	192.2	20
		1519	1373	1300	—		0.24	288.8	
155.0	-4.89	1450	1333	1219	1159	17.0	0.24	231.5	24
		2103	1929	1752	1666		0.24	348.3	
180.1	-6.15	1829	1693	1558	1422	24.7	0.31	359.3	28
		2667	2447	2248	2048		0.31	540.1	
224.9	-7.52	2336	2114	1957	1801	27.8	0.31	412.3	32
		3417	3064	2821	2601		0.31	619.5	
280.0	-9.04	2932	2579	2403	2226	31.5	0.31	465.2	36
		4276	3747	3483	3218		0.31	696.6	
328.5	-10.03	3571	3174	2888	2689	50.0	0.39	643.7	40
		5202	4629	4188	3880		0.39	967.8	
390.2	-14.07	4276	3747	3417	3218	56.0	0.39	709.9	44
		6239	5445	4960	4629		0.39	1067	
476.2	-16.62	5180	4585	4100	3747	61.9	0.39	793.7	48
		7539	6657	5930	5401		0.39	1190	
573.2	-18.67	6393	5599	5048	4651	71.0	0.47	1069	54
		9347	8134	7319	6701		0.47	1604	
707.7	-20.75	7782	6900	6150	5687	106.3	0.47	1188	60
		11353	10008	8884	8201		0.47	1785	

PN

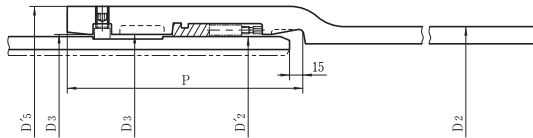
Appendix Table 11 PN-Fittings
(For Socket Spigot pipes)



Size 20~24



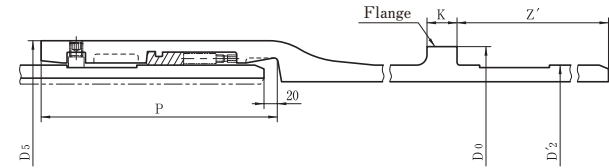
Size 28~44



DN (Inches)	Outside Diameter(Inches)		Dimensions(Inches)			Mass(lb)
	D'2	D2	D3	D'5	P	Socket projection
20	20.00	20.79	20.14	22.52	9.65	153.9
24	24.00	24.83	24.14	26.59	9.96	198.4
28	28.00	28.86	28.16	30.44	9.96	231.5
32	32.00	32.91	32.16	34.52	10.43	286.6
36	36.00	36.97	36.16	38.59	10.83	346.1
40	40.00	40.98	40.16	42.68	10.83	399.0
44	44.00	45.04	44.16	46.76	11.34	469.6

Note. It is acceptable if the inside of socket has the shape of a broken line

Appendix Table 12 PN-Fittings
(For Tees with flanged branch and collars)

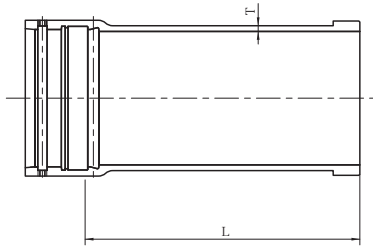


PN

DN (Inches)	Outside Diameter (Inches)	Dimensions(Inches)					Mass(lb)		
		D0	D5	K	P	Z'	Socket projection	Flange projection	Spigot groove
28	28.00	29.50	29.89	1.50	9.96	9.17	170.6	29.3	-6.15
32	32.00	33.73	33.97	1.50	10.43	9.65	214.1	38.1	-7.52
36	36.00	37.73	38.05	2.52	10.83	10.04	264.6	69.2	-9.04
40	40.00	41.73	42.13	2.52	10.83	10.04	308.6	76.7	-10.03
44	44.00	45.97	46.20	2.52	11.34	10.55	368.2	95.5	-14.07
48	49.06	51.02	51.34	2.52	11.73	10.94	445.3	106.3	-16.62
54	55.12	57.09	57.52	2.52	11.73	10.94	533.5	119.0	-18.67
60	61.18	63.15	63.78	2.52	11.73	10.94	645.9	131.8	-20.75

Appendix Table 13 PN-Socket Spigot Pipes (PN-NS) 

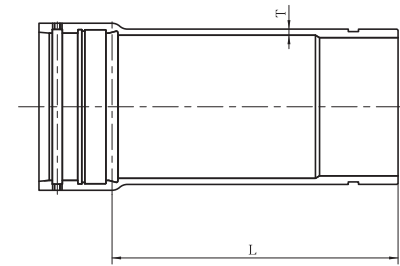
Size 20~40



PN-NS

DN (Inches)	Wall Thickness (Inches)	Nominal laying length (feet)	Mass(lb)
D	T	L	
20	0.59	31.89	465.2
24	0.63	31.89	595.2
28	0.67	38.58	831.1
32	0.71	39.37	1025
36	0.75	39.37	1221
40	0.79	39.37	1419

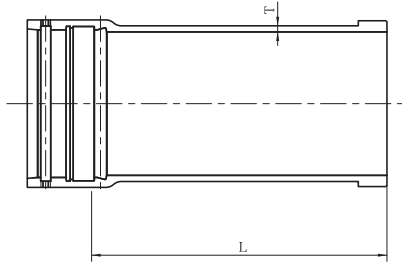
Appendix Table 14 PN-Socket Spigot Pipes (PN-UF) 



PN-UF

DN (Inches)	Wall Thickness (Inches)	Nominal laying length (feet)	Mass(lb)
D	T	L	
28	0.67	38.58	833.3
32	0.71	39.37	1027
36	0.75	39.37	1223
40	0.79	39.37	1430
44	0.83	39.37	1660

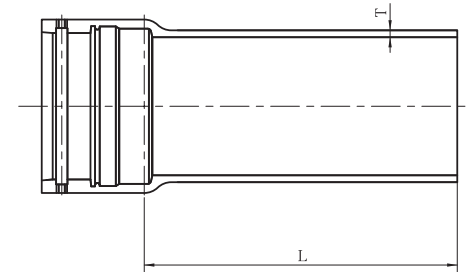
Appendix Table 15 PN-Socket Spigot Pipes (PN-S) 



PN-S

DN (Inches)	Wall Thickness (Inches)	Nominal laying length (feet)	Mass(lb)
D	T	L	
20	0.59	31.89	465.2
24	0.63	31.89	595.2
28	0.67	38.58	831.1
32	0.71	39.37	1025
36	0.75	39.37	1221
40	0.79	39.37	1419
44	0.83	39.37	1646

Appendix Table 16 PN-Socket Spigot Pipes (PN-K) 

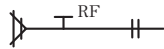


PN-K

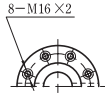
DN (Inches)	Wall Thickness (Inches)	Nominal laying length (feet)	Mass(lb)
D	T	L	
20	0.59	31.89	458.6
24	0.63	31.89	588.6
28	0.67	38.58	813.5
32	0.71	39.37	1005
36	0.75	39.37	1199
40	0.79	39.37	1395
44	0.83	39.37	1620

PN

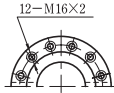
Appendix Table 17 PN-Tees with flanged branch



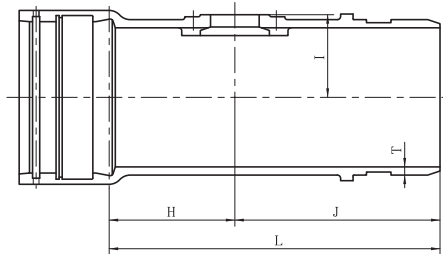
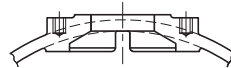
Allocation of tap holes for DN 4"



Allocation of tap holes for DN 6" and DN 8"



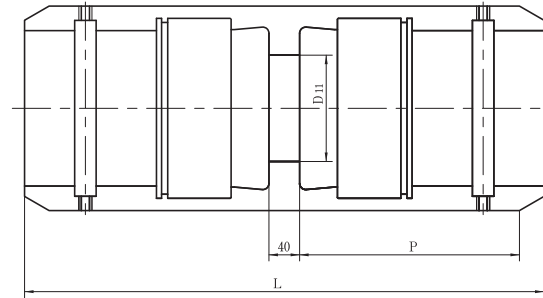
Shape of Flange



DN (Inches)	Wall Thickness (Inches)	Dimensions(Inches)					Mass(lb)
		D	d	T	H	I	
28	3.94	0.67	14.37	14.37	23.62	37.99	765.0
32	3.94	0.71	14.37	16.34	23.62	37.99	932.5
36	3.94	0.75	14.37	18.31	23.62	37.99	1139
40	5.91	0.79	14.37	20.28	23.62	37.99	1329
44	5.91	0.83	14.37	22.24	23.62	37.99	1545
48	7.87	0.87	14.37	24.80	23.62	37.99	1801
54	7.87	0.94	14.37	27.95	23.62	37.99	2186
60	7.87	1.02	14.37	31.10	23.62	37.99	2623

Note. The details of flange are applicable to JIS G 5526 · 5527 RF (Raised Face) Type Flange 7.5K. However, the number of tap holes are different.

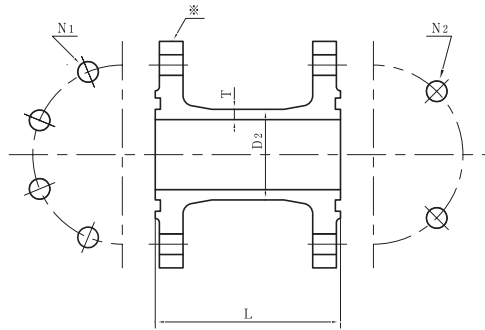
Appendix Table 18 PN-Collars



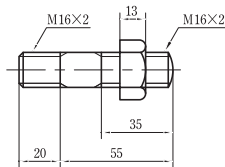
PN

DN (Inches)	Dimensions(Inches)			Mass(lb)
	D	D 11	P	
28	26.58	9.96	23.86	399.0
32	30.50	10.43	24.80	502.6
36	34.43	10.83	25.59	615.1
40	38.19	10.83	25.59	712.1
44	42.11	11.34	26.61	864.2
48	47.09	11.73	27.40	1038
54	52.87	11.73	27.40	1247
60	58.82	11.73	27.40	1510

Appendix Table 19 PN-Double Flanged Pipes
(For Tees with Flanged Branch)



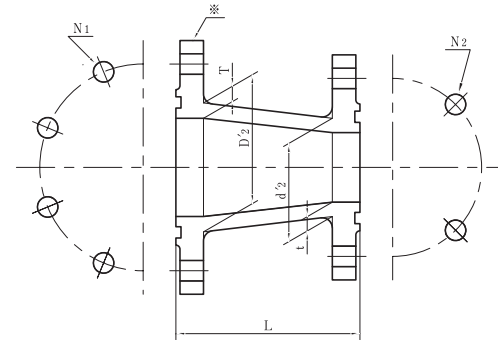
Stud Bolts and Nuts



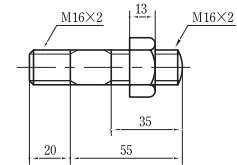
DN (Inches)	Wall Thickness (Inches)	Outside Diameter (Inches)	Nominal laying length (feet)	Number of bolt holes		Mass(lb)
				N 1	N 2	
D	T	D 2	L	N 1	N 2	
4	0.33	4.65	150	8	4	26.0
6	0.35	6.65	150	12	6	36.8

- Note 1.** The details of flange are applicable to JIS G 5526 · 5527 GF (Grooved Face) Type Flange 7.5K. However, the number of bolt holes are different as of the side marked with “※” .
- 2.** The material of the stud bolt and nut shall be of ss400, SWRM member, SWRH member, SWRCH member, sus 304, sus304J3 and susXM7. Besides, the bolts and nuts shall be Zinc plated in case of ss400, SWRM member, SWRH member and SWRH member.

Appendix Table 20 PN-Double Flanged Tapers
(For Tees with Flanged Branch)



Stud Bolts and Nuts

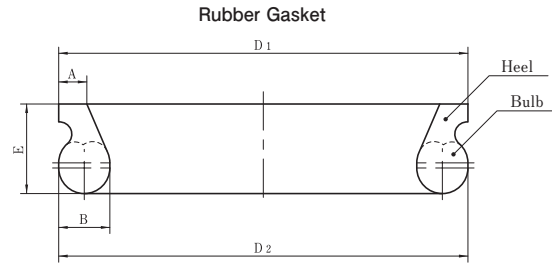
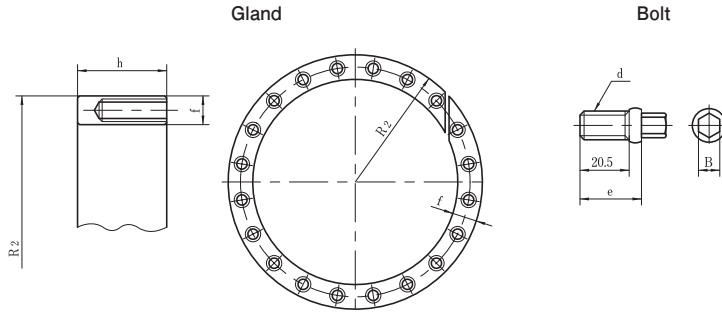


DN (Inches)	Wall Thickness (Inches)	Outside Diameter (Inches)	Nominal laying length (feet)	Number of bolt holes		Mass(lb)
				N 1	N 2	
D	d	T	t	D' 2	d' 2	L
4	2.95	0.53	0.53	5.04	4.06	150
8	5.91	0.63	0.55	9.06	7.05	150

- Note 1.** The details of flange are applicable to JIS G 5526 · 5527 GF (Grooved Face) Type Flange 7.5K. However, the number of bolt holes are different as of the side marked with “※” .
- 2.** The material of the stud bolt and nut shall be of ss400, SWRM member, SWRH member, SWRCH member, sus 304, sus304J3 and susXM7. Besides, the bolts and nuts shall be Zinc plated in case of ss400, SWRM member, SWRH member and SWRH member.

PN

Appendix Table 21 PN-Accessories(1)

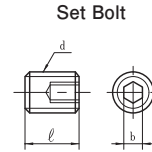
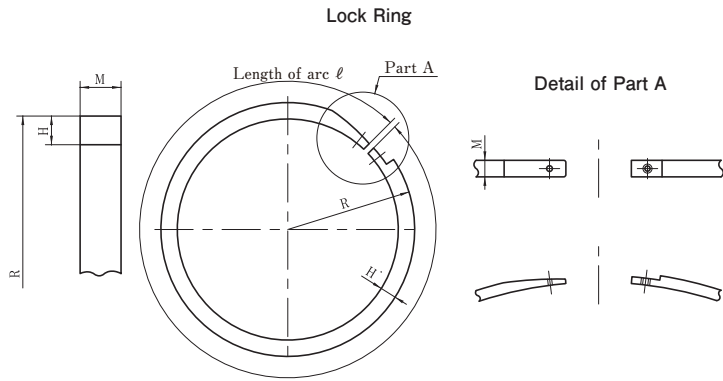


PN

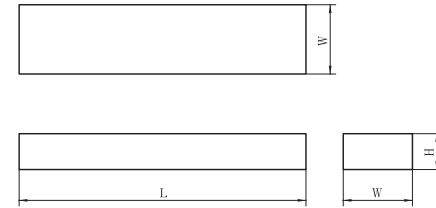
DN (Inches)	Gland				Bolt				
	Dimensions(Inches)			Mass (lb)	Bolt Size (mm) d	Pitch of a screw	Dimensions(Inches)		one set of number
	R 2	f	h				B	e	
28	14.59	0.45	1.57	16.0	M9	0.05	0.31	0.89	20
32	16.59	0.45	1.57	18.3	M9	0.05	0.31	0.89	24
36	18.58	0.45	1.57	20.5	M9	0.05	0.31	0.89	26
40	20.59	0.45	1.57	22.9	M9	0.05	0.31	0.89	26
44	22.59	0.45	1.57	25.1	M9	0.05	0.31	0.89	30
48	25.12	0.45	1.57	27.8	M9	0.05	0.31	0.89	34
54	28.15	0.45	1.57	31.3	M9	0.05	0.31	0.89	34
60	31.18	0.45	1.57	35.1	M9	0.05	0.31	0.89	38

DN (Inches)	Dimensions(Inches)				
	D ₁	D ₂	A	B	E
20	21.65	21.65	0.55	1.00	1.65
24	25.69	25.69	0.55	1.00	1.65
28	29.41	29.41	0.43	0.79	1.42
32	33.50	33.50	0.43	0.79	1.42
36	37.50	37.50	0.43	0.79	1.42
40	41.61	41.61	0.43	0.79	1.42
44	45.61	45.61	0.43	0.79	1.42
48	50.67	50.67	0.43	0.79	1.42
54	56.73	56.73	0.43	0.87	1.46
60	62.80	62.80	0.43	0.87	1.46

Appendix Table 22 PN-Accessories(2)



Rubber Sponge

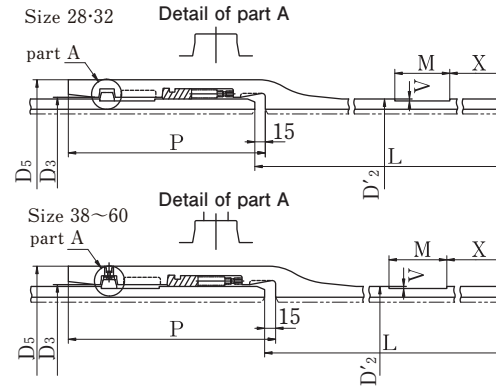
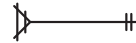


PN

DN (Inches)	Lock Ring				Mass(lb)
	Dimensions(Inches)				
	R	R	H	M	
20	10.20	63.46	0.39	0.59	3.6
24	12.20	76.06	0.39	0.59	4.4
28	14.17	88.11	0.39	0.79	6.8
32	16.22	100.94	0.43	0.79	8.7
36	18.23	113.58	0.43	0.79	9.7
40	20.24	126.18	0.43	0.79	10.7
44	22.28	139.06	0.47	0.98	16.2
48	24.80	154.88	0.47	0.98	18.1
54	27.83	173.94	0.47	0.98	20.3
60	30.87	193.11	0.47	1.18	27.1

Bolt Size (mm)	Pitch of a screw	Dimensions(Inches)		one set of number	Rubber Sponge			DN (Inches)
		b	R		H	L	W	
d								
M14	0.06	0.24	0.47	7	0.59	4.17	0.94	20
M14	0.06	0.24	0.51	7	0.59	4.96	0.94	24
M18	0.08	0.31	0.51	9	0.59	5.16	1.14	28
M18	0.08	0.31	0.51	9	0.59	5.75	1.14	32
M18	0.08	0.31	0.55	9	0.59	6.14	1.14	36
M18	0.08	0.31	0.59	11	0.59	6.73	1.14	40
M18	0.08	0.31	0.59	11	0.59	7.72	1.34	44
M18	0.08	0.31	0.63	11	0.59	8.11	1.34	48
M18	0.08	0.31	0.63	11	0.59	9.69	1.34	54
M24	0.08	0.47	0.71	11	0.59	10.28	1.54	60

Appendix Table 23 PN-Pipes (CP Method)



PN

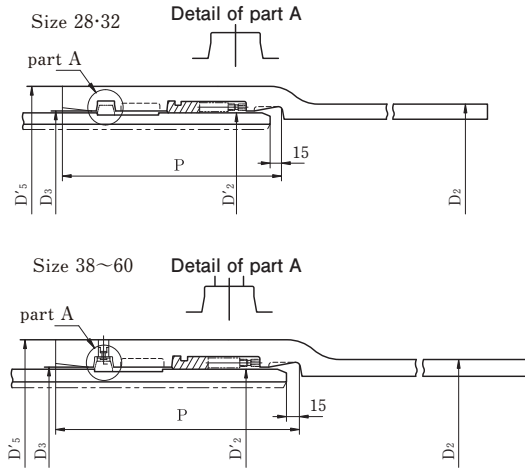
DN (Inches)	Wall Thickness (Inches)	Outside Diameter (Inches)	Dimensions(Inches)						Nominal laying length (feet)	Socket projection
			D ₃	D ₅	M	P	V	X		
28	0.39	28.00	28.16	29.89	2.76	9.96	0.10	5.12	13.12 19.96	180.1
32	0.43	32.00	32.16	33.97	2.95	10.43	0.10	5.12	13.12 19.96	224.9
36	0.43	36.00	36.16	38.05	3.15	10.83	0.10	5.31	13.12 19.96	280.0
40	0.47	40.00	40.16	42.13	3.15	10.83	0.10	5.31	13.12 19.96	328.5
44	0.51	44.00	44.16	46.20	3.35	11.34	0.12	5.31	13.12 19.96	390.2
48	0.53	49.06	49.21	51.34	3.54	11.73	0.12	5.51	13.12 19.96	476.2
54	0.59	55.12	55.28	57.52	3.54	11.73	0.12	5.51	13.12 19.96	573.2
60	0.65	61.18	61.34	63.78	3.54	11.73	0.12	5.51	13.12 19.96	707.7

Note 1. The mass of Socket Projection and the mass per 1 foot of the pipe body are rounded off to significant figures. So, the total mass does not always match the mass per 1 piece of the pipe.

Spigot groove	Mass(lb)		Thickness (Inches)	Lining		DN (Inches)	
	Per 1 foot D P	Per 1 Piece D P		t1	Mass(lb)		
					Per 1 foot		Per 1 Piece
-6.15	347.2	1558	0.01	90.3	359.3	28	
		2248	0.01	90.3	540.1		
-7.52	436.8	1957	0.01	103.4	412.3	32	
		2821	0.01	103.4	619.5		
-9.04	492.1	2226	0.01	116.5	465.2	36	
		3218	0.01	116.5	696.6		
-10.03	596.6	2689	0.02	161.7	643.7	40	
		3880	0.02	161.7	967.8		
-14.07	711.1	3199	0.02	178.1	709.9	44	
		4629	0.02	178.1	1067		
-16.62	824.0	3747	0.02	199.0	793.7	48	
		5401	0.02	199.0	1190		
-18.67	1028	4651	0.02	268.3	1069	54	
		6701	0.02	268.3	1604		
-20.75	1256	5687	0.02	298.2	1188	60	
		8201	0.02	298.2	1785		

Note 2. It is acceptable if the inside of socket has the shape of the broken line.

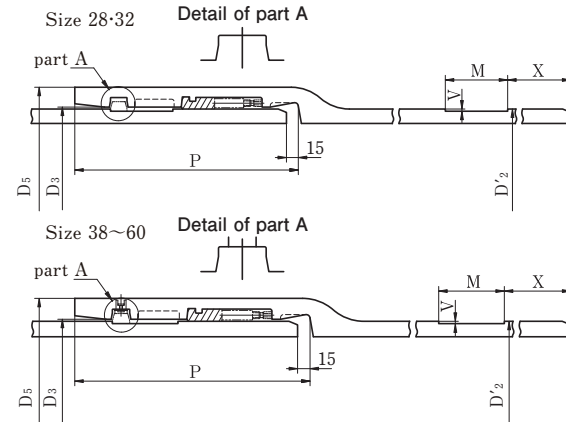
Appendix Table 24 PN-Fittings (CP Method)
(For Socket Spigot Pipes)



DN (Inches)	Outside Diameter (Inches)		Dimensions(Inches)			Mass(lb)
	D'2	D2	D3	D'5	P	
28	28	28.86	28.16	30.44	9.96	231.5
32	32	32.91	32.16	34.52	10.43	286.6
36	36	36.97	36.16	38.60	10.83	346.1
40	40	40.98	40.16	42.68	10.83	399.0
44	44	45.04	44.16	46.76	11.34	469.6

Note. It is acceptable if the inside of socket has the shape of the broken line.

Appendix Table 25 PN-Fittings (CP Method)
(For Bend and Collars)

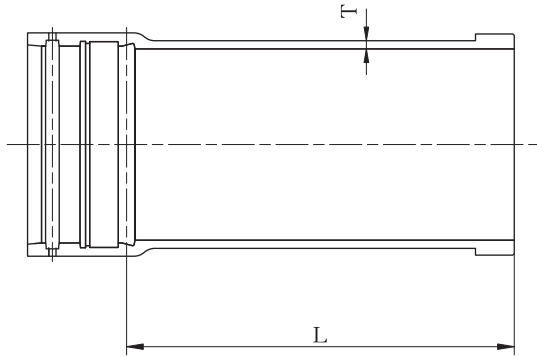
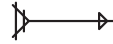


DN (Inches)	Outside Diameter (Inches)	Dimensions(Inches)						Mass(lb)	
		D3	D5	M	P	V	X	Socket projection	Spigot groove
28	28.00	28.16	29.89	2.76	9.96	0.10	5.12	170.6	-6.15
32	32.00	32.16	33.97	2.95	10.43	0.10	5.12	214.1	-7.52
36	36.00	36.16	38.05	3.15	10.83	0.10	5.31	264.6	-9.04
40	40.00	40.16	42.13	3.15	10.83	0.10	5.31	308.6	-10.03
44	44.00	44.16	46.20	3.35	11.34	0.12	5.31	368.2	-14.07
48	49.06	49.21	51.34	3.54	11.73	0.12	5.51	445.3	-16.62
54	55.12	55.28	57.52	3.54	11.73	0.12	5.51	533.5	-18.67
60	61.18	61.34	63.78	3.54	11.73	0.12	5.51	645.9	-20.75

Note. It is acceptable if the inside of socket has the shape of the broken line.

PN

Appendix Table 26 PN-Socket Spigot Pipes (CP Method) (PN-NS)

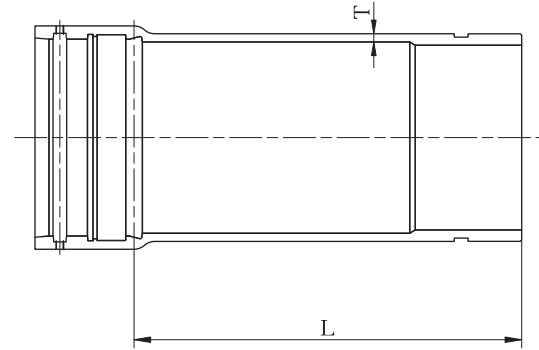
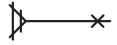


PN-NS

DN (Inches)	Wall Thickness (Inches)	Nominal laying length (feet)	Mass(lb)
D	T	L	
28	0.67	38.58	831.1
32	0.71	39.37	1025
36	0.75	39.37	1221
40	0.79	39.37	1419

Note. The figure applies if the pipe is bigger than DN36 “.

Appendix Table 27 PN-Socket Spigot Pipes (CP Method) (PN-UF)



PN-UF

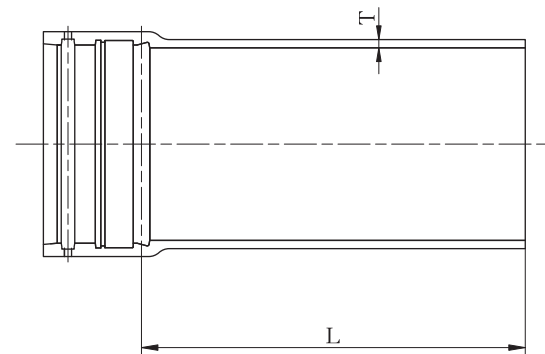
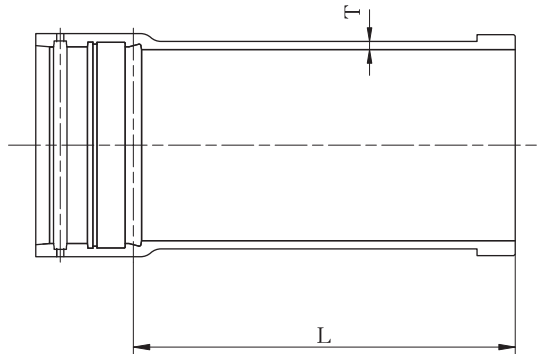
DN (Inches)	Wall Thickness (Inches)	Nominal laying length (feet)	Mass(lb)
D	T	L	
32	0.71	39.37	1027
36	0.75	39.37	1223
40	0.79	39.37	1430
44	0.83	39.37	1660

Note. The figure applies if the pipe is bigger than DN36 “.

PN

Appendix Table 28 PN-Socket Spigot Pipes (CP Method) (PN-S) 

Appendix Table 29 PN-Socket Spigot Pipes (CP Method) (PN-K) 



PN

PN—S

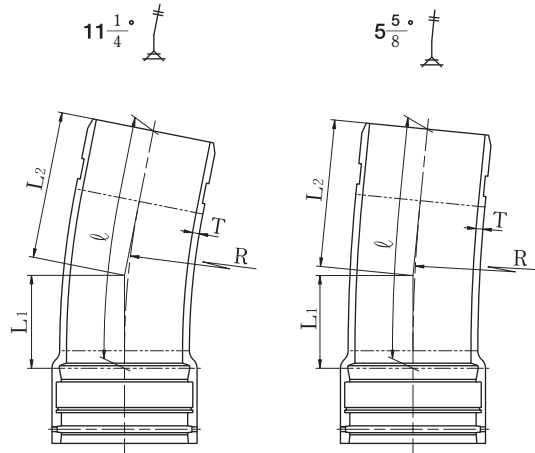
DN (Inches)	Wall Thickness (Inches)	Nominal laying length (feet)	Mass(lb)
D	T	L	
44	0.83	39.37	1646

PN—K

DN (Inches)	Wall Thickness (Inches)	Nominal laying length (feet)	Mass(lb)
D	T	L	
28	0.67	38.58	813.5
32	0.71	39.37	1005
36	0.75	39.37	1199
40	0.79	39.37	1395
44	0.83	39.37	1620

Note. The figure applies if the pipe is bigger than DN36 “.

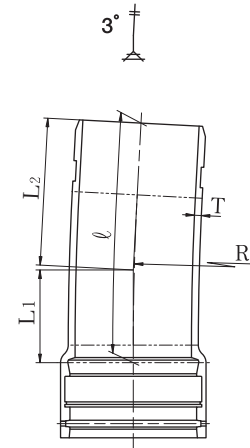
Appendix Table 30 PN-Socket Spigot Bends



DN (Inches)	Wall Thickness (Inches)	11 1/4°					5 5/8°				
		Dimensions(Inches)			Length of Pipe Center (inches)	Mass(lb)	Dimensions(Inches)			Length of Pipe Center (inches)	Mass(lb)
D	T	R	L1	L2			φ	R	L1		
28	0.67	236.22	26.02	33.23	59.09	1034	472.44	25.98	33.19	59.13	1034
32	0.71	236.22	26.02	33.70	59.57	1269	472.44	25.98	33.66	59.61	1267
36	0.75	236.22	26.02	34.09	59.96	1525	472.44	25.98	34.06	60.00	1527
40	0.79	236.22	26.02	34.09	59.96	1785	472.44	25.98	34.06	60.00	1787
44	0.83	236.22	26.02	34.61	60.47	2089	472.44	25.98	34.57	60.51	2089
48	0.87	236.22	26.02	35.00	60.87	2469	472.44	25.98	34.96	60.91	2469
54	0.94	236.22	26.02	35.00	60.87	3020	472.44	25.98	34.96	60.91	3020
60	1.02	236.22	26.02	35.00	60.87	3637	472.44	25.98	34.96	60.91	3637

Note. The figure applies if the pipe is bigger than DN36 “.

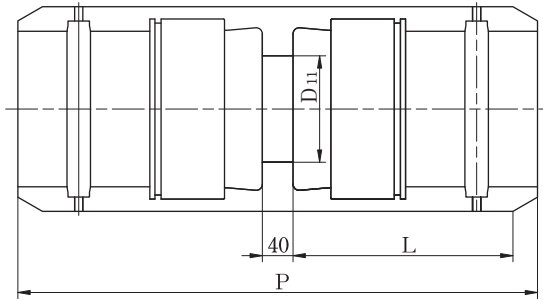
PN-Socket Spigot Bends (CP Method)



3°					DN (Inches)
Dimensions(Inches)			Length of Pipe Center (inches)	Mass(lb)	
R	L1	L2			φ
885.83	25.94	33.15	59.09	1031	28
885.83	25.94	33.62	59.57	1267	32
885.83	25.94	34.02	59.96	1525	36
885.83	25.94	34.02	59.96	1785	40
885.83	25.94	34.53	60.47	2087	44
885.83	25.94	34.92	60.87	2469	48
885.83	25.94	34.92	60.87	3020	54
885.83	25.94	34.92	60.87	3637	60

PN

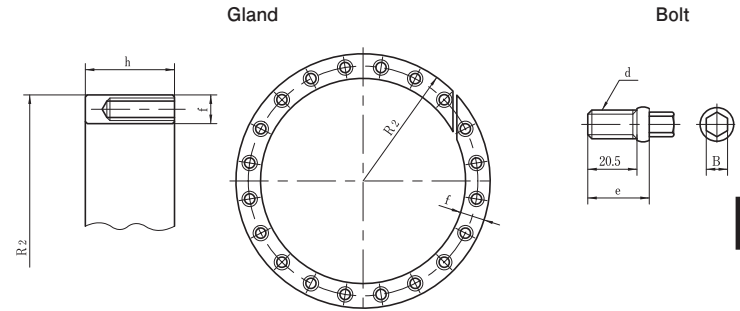
Appendix Table 31 PN-Collars (CP Method)



DN (Inches)	Dimensions(Inches)			Mass(lb)
	D	D 11	P	
28	26.58	9.96	23.86	399.0
32	30.50	10.43	24.80	502.6
36	34.43	10.83	25.59	615.1
40	38.19	10.83	25.59	712.1
44	42.11	11.34	26.61	864.2
48	47.09	11.73	27.40	1038
54	52.87	11.73	27.40	1247
60	58.82	11.73	27.40	1510

Note. The figure applies if the pipe is bigger than DN36 “.

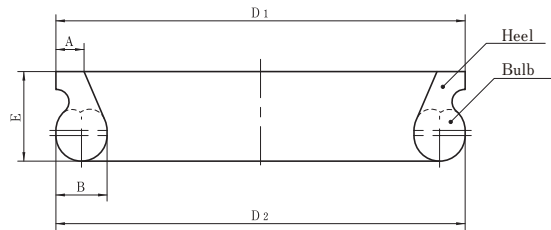
Appendix Table 32 PN-Accessories(1)



DN (Inches)	Gland					Bolt			
	Dimensions(Inches)			Mass(lb)	Bolt Size (mm)	Pitch of a screw	Dimensions(Inches)		one set of number
	R 2	f	h		d		B	e	
28	14.59	0.45	1.57	16.0	M9	0.05	0.31	0.89	20
32	16.59	0.45	1.57	18.3	M9	0.05	0.31	0.89	24
36	18.58	0.45	1.57	20.5	M9	0.05	0.31	0.89	26
40	20.59	0.45	1.57	22.9	M9	0.05	0.31	0.89	26
44	22.60	0.45	1.57	25.1	M9	0.05	0.31	0.89	30
48	25.12	0.45	1.57	27.8	M9	0.05	0.31	0.89	34
54	28.15	0.45	1.57	31.3	M9	0.05	0.31	0.89	34
60	31.18	0.45	1.57	35.1	M9	0.05	0.31	0.89	38

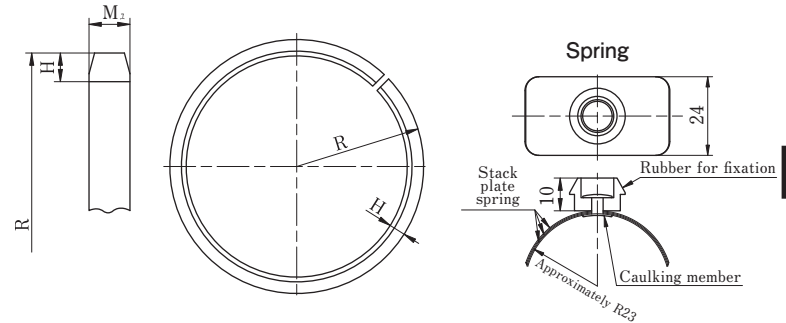
PN

Rubber Gasket



DN (Inches)	Dimensions(Inches)				
	D_1	D_2	A	B	E
28	29.41	29.41	0.43	0.79	1.42
32	33.50	33.50	0.43	0.79	1.42
36	37.50	37.50	0.43	0.79	1.42
40	41.61	41.61	0.43	0.79	1.42
44	45.61	45.61	0.43	0.79	1.42
48	50.67	50.67	0.43	0.79	1.42
54	56.73	56.73	0.43	0.87	1.46
60	62.80	62.80	0.43	0.87	1.46

Appendix Table 33 PN-Accessories(2)



PN

DN (Inches)	Dimensions(Inches)			Mass(lb)
	R	H	M	
28	13.98	0.39	0.98	8.0
32	16.02	0.43	0.98	10.1
36	18.23	0.43	0.98	11.5
40	20.24	0.43	0.98	12.8
44	22.28	0.47	1.18	18.6
48	24.80	0.47	1.18	20.8
54	27.83	0.47	1.18	23.4
60	30.87	0.47	1.38	30.6