

Farm & Industrial Machinery

The Farm & Industrial Machinery Business manufactures agricultural machinery and agriculture-related products that contribute to stable food production across many countries and regions, as well as combustion engines and construction machinery.

The Kubota Group's major products



Tractors

used mainly in agricultural operations, including tillage, leveling and transportation.



Combine harvesters

used for simultaneous harvesting and threshing of crops such as rice, wheat and pulses.



Rice transplanters

used to transplant rice seedlings to rice paddies, contributing significantly to labor-saving.



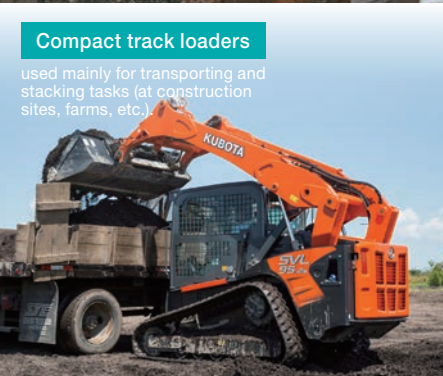
Utility vehicles

useful in a variety of operations, including agricultural work, civil engineering and leisure activities.



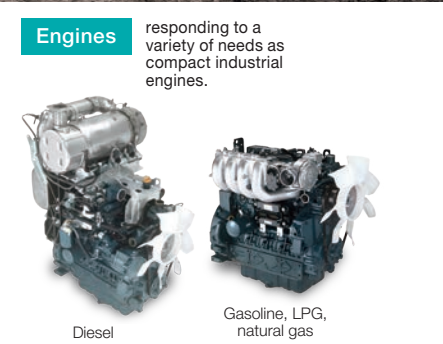
Mini excavators

used in civil engineering and other operations; especially useful in narrow work areas, such as city streets.



Compact track loaders

used mainly for transporting and stacking tasks (at construction sites, farms, etc.).



Engines

responding to a variety of needs as compact industrial engines.

Diesel

Gasoline, LPG, natural gas

Kubota's Innovation

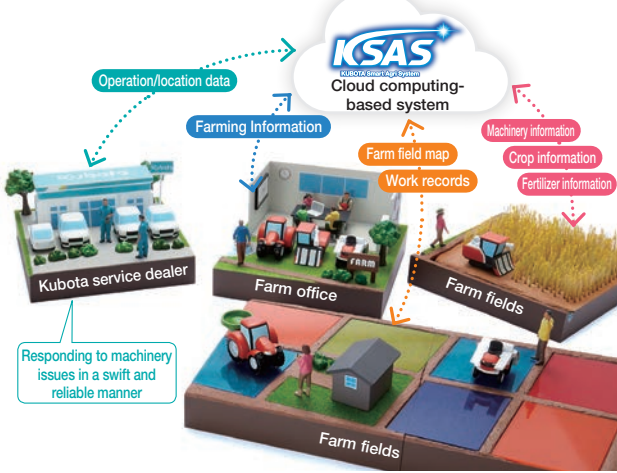
Kubota Aims for Smart Agriculture

As the farming population ages and the scale of farms expands, it is globally crucial to grow agricultural produce efficiently with higher yield and quality.

By promptly introducing ICT (information and communication technology) and robotic technology in agriculture, Kubota will realize smart agriculture that reduces labor and increases precision, contributing to the abundant and stable production of food.

Kubota Smart Agri System (KSAS)

A system to support farm operations by integrating advanced technologies with ICT. KSAS visualizes agricultural data, enabling efficient farm operations with no need to rely on experience and intuition.



The automated agricultural system Agri Robo series

Kubota's automated agricultural machinery Agri Robo series consists of three agricultural machines for rice farming: tractors, combine harvesters and transplanters. Kubota will continue to develop ICT and robot agricultural machinery to address challenges faced by Japan's agriculture industry, thereby commercializing an integrated farming system using automated agricultural machinery.



TOPICS

The "Kubota Farm" demonstration farm is launched in Thailand

Since the establishment of a manufacturing and distribution hub in Thailand back in 1978, Kubota has been promoting agricultural mechanization in the ASEAN region while contributing to regional economic development. Specifically, recent development efforts are focused on agricultural machinery suitable for local crops, rice paddy conditions and farming systems. Moreover, Kubota Research and Development Asia—an R&D hub—was launched in Thailand in 2016 to further expand the product lineup.

As part of these efforts, "Kubota Farm" was also established in Thailand in August 2020, where farming and management techniques

using advanced machines and technologies are tested and demonstrated in this extensive experimental farm. Equipped with dedicated facilities, the farm also provides distribution dealers and customers (farmers) with first-hand experience of advanced agricultural techniques, which in turn promotes sales and educates local farm workers.

Kubota is committed to expanding operations in the growing ASEAN market, serving the needs of local communities and contributing to the development of local agriculture.



Opening ceremony attended by Her Royal Highness Princess Maha Chakri Sirindhorn



A rice paddy at Kubota Farm