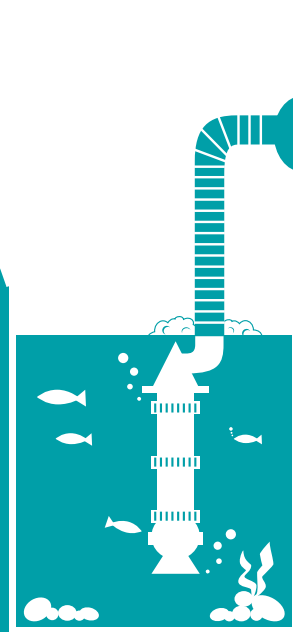


KUBOTA PIPELINE SYSTEM

Pipes, Pumps and Valves



Kubota

KUBOTA Corporation

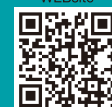
Pipe Systems Sales Section
International Water and Environmental Infrastructure Sales Dept.
1-3, Kyobashi 2-chome, Chuo-ku, Tokyo,
104-8307, JAPAN
Tel : +81-3-3245-3228
Fax : +81-3-3245-3830
Website : <https://www.kubota.com/products/ironpipe/>
E-mail : kbt_g.ironpipe@kubota.com

Kubota Water and Environment U.S.A. Corporation

ERDIP Dept. / North America

3528 Torrance Boulevard, Suite 112,
Torrance, CA 90503, U.S.A.
Tel : +1-424-358-5200
Website : <https://www.kubota-membrane.com/page/erdip>
E-mail : kbt_g.erdip-usa@kubota.com

Ductile Iron Pipes
WEBSITE



Facebook



KUBOTA PIPELINE SYSTEM

Drainage Pump
with Vehicle



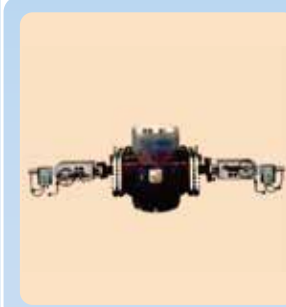
Ductile Iron
Water Well Casing Pipe



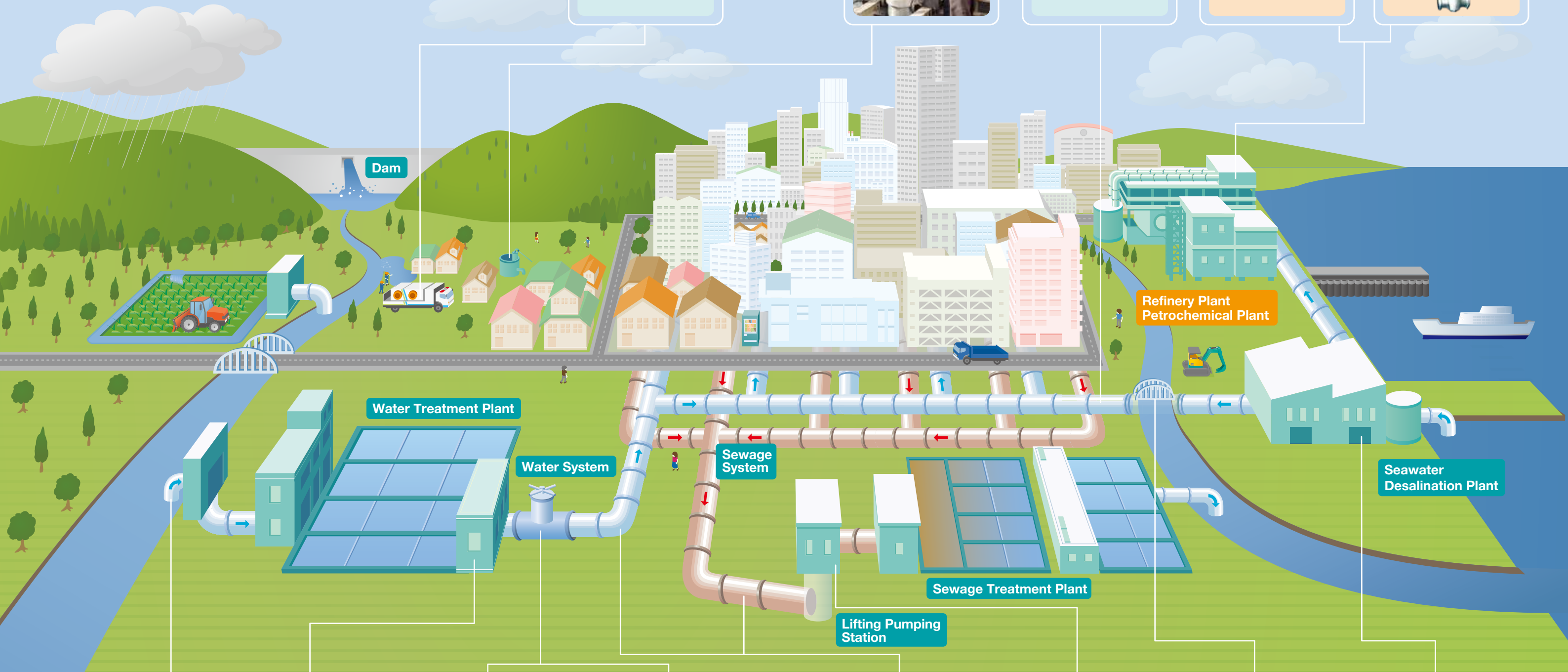
Ductile Iron Pipe
(Earthquake Resistant Joint)



FCC Slide Valve



Double Disc Wedge
Gate Valve



Vertical Mixed Flow Pump



Double Suction Volute
Pump



Butterfly Valve



Resilient Seated
Gate Valve



Ductile Iron Pipe



Vertical Shaft Volute Type
Mixed Flow Pump



Ductile Iron Pipe
(Jacking Pipe)



High Pressure Pump



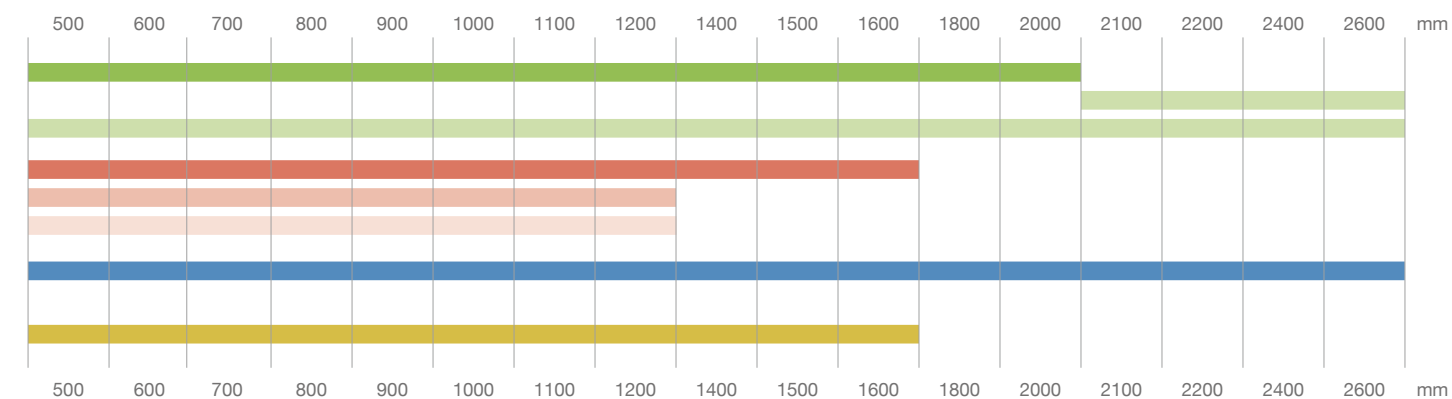
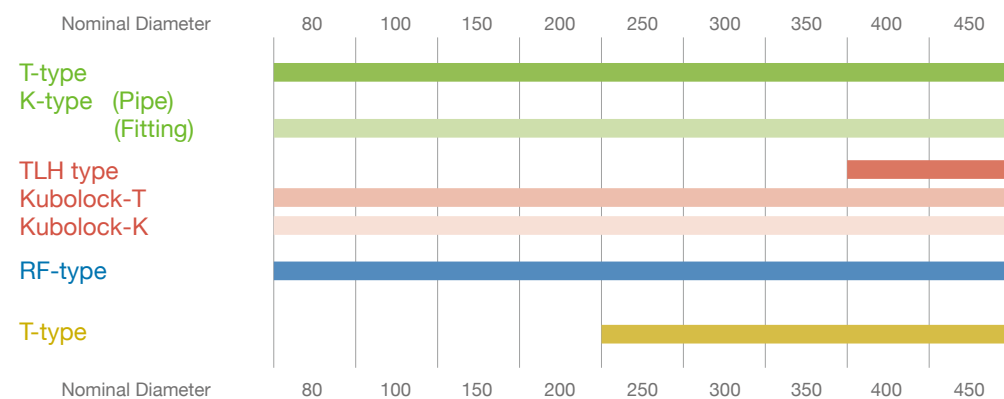
LINE UP

Flexible Joint

Restrained Joint

Flanged Joint

Jacking Pipe

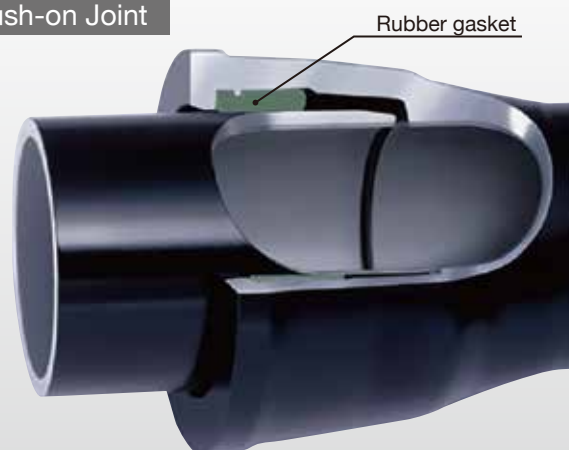


Flexible Joint

T-type

DN80-DN2000

Push-on Joint

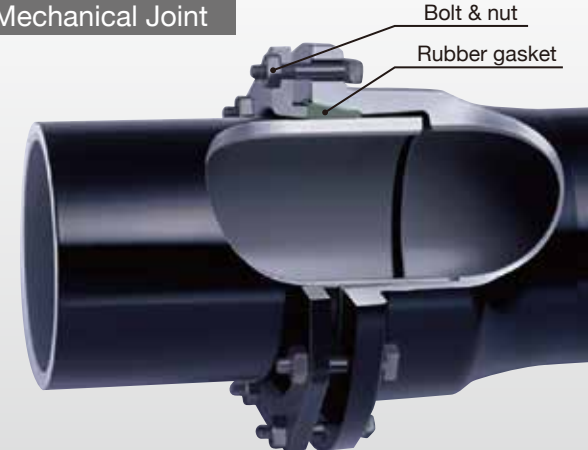


T-type joint is push-on joint. It has flexibility and excellent water tightness.

K-type

Pipe: DN2100-DN2600
Fitting: DN80-DN2600

Mechanical Joint

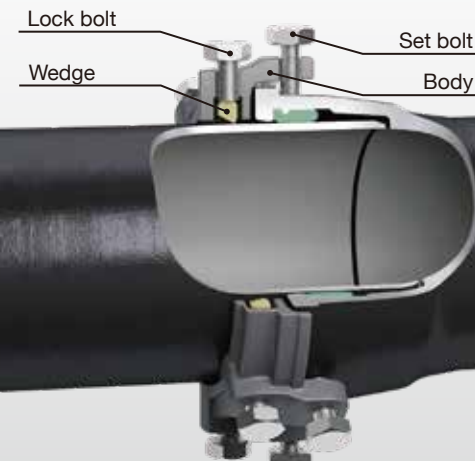


K-type joint is mechanical joint. It has flexibility and excellent water tightness.

Restrained Joint

Kubolock-T

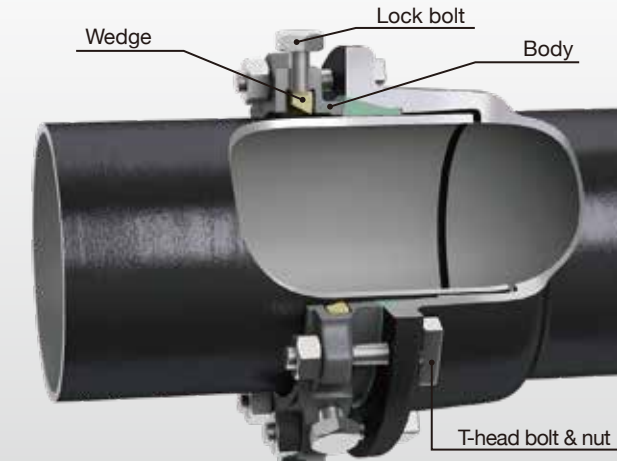
DN80-DN1200



Kubolock-T is restrained coupling. It can be simply assembled with T-type joint for restrained mechanism.

Kubolock-K

DN80-DN1200

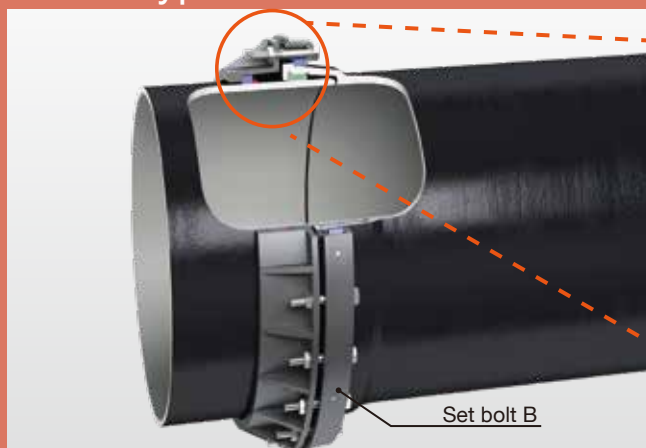


Kubolock-K is retainer gland. It can be simply assembled with K-type joint for restrained mechanism.

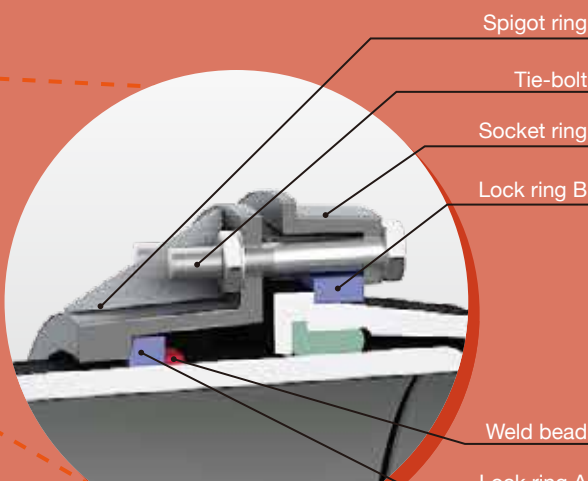
Restrained Joint

TLH-type

DN400-DN1600



TLH-type is restrained joint. It is converted from T-type joint by providing the spigot with projection and assembling the special joint accessories. It can be used under high pressure and can be used with deflection.



Flanged Joint

RF-type

DN80-DN2600

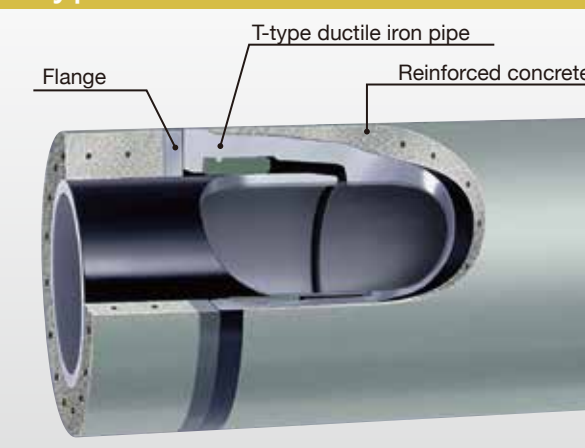


RF type is rigid joint. Generally, it is used to joint valves and other parts.

Jacking Pipe

T-type (For Jacking Method)

DN250-DN1600

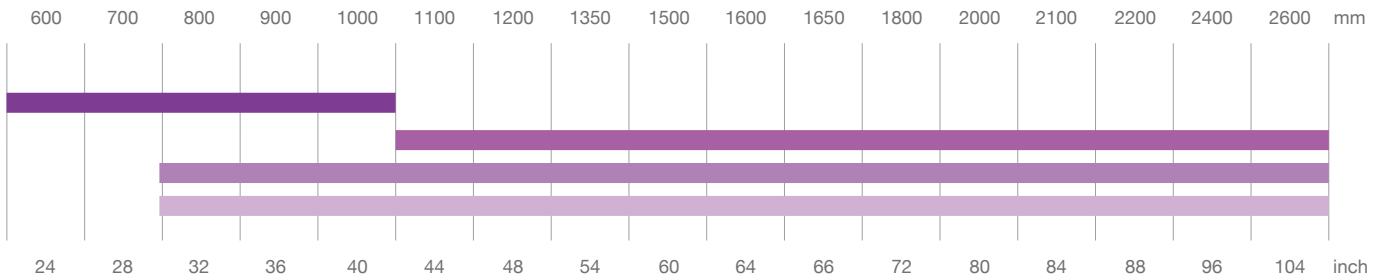
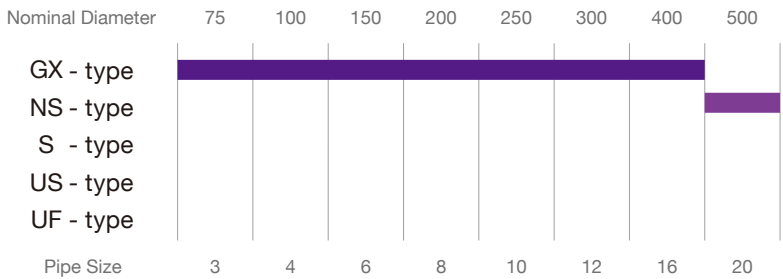


Jacking method is used to install a pipeline without trench excavation. Pipe is covered with reinforced concrete, which allows the pipe to be jacked directly into the ground without a pipe casing.

LINE UP

Earthquake Resistant Joint

The Earthquake Resistant Ductile Iron Pipe (ERDIP) absorbs the large ground displacement such as ground subsidence and crack by joints expansion/contraction, deflection, and anti-pull out structure.



Pipes

GX-type

DN75-DN400
3"-16"

Push-on Joint



*External coating: C-protect

*Lock ring is preset.

Pipes

NS-type

DN500-DN1000
20"-40"

Mechanical Joint



Pipes

S-type

DN1100-DN2600
44"-104"

Mechanical Joint



Pipes

US-type

DN800-DN2600
32"-104"

Mechanical Joint



Fittings

GX-type

DN75-DN400
3"-16"

Mechanical Joint



*External coating: C-protect

*Lock ring is preset.

Fittings

NS-type

DN500-DN1000
20"-40"

Mechanical Joint



Fittings

UF-type

DN800-DN2600
32"-104"

Mechanical Joint



05

06