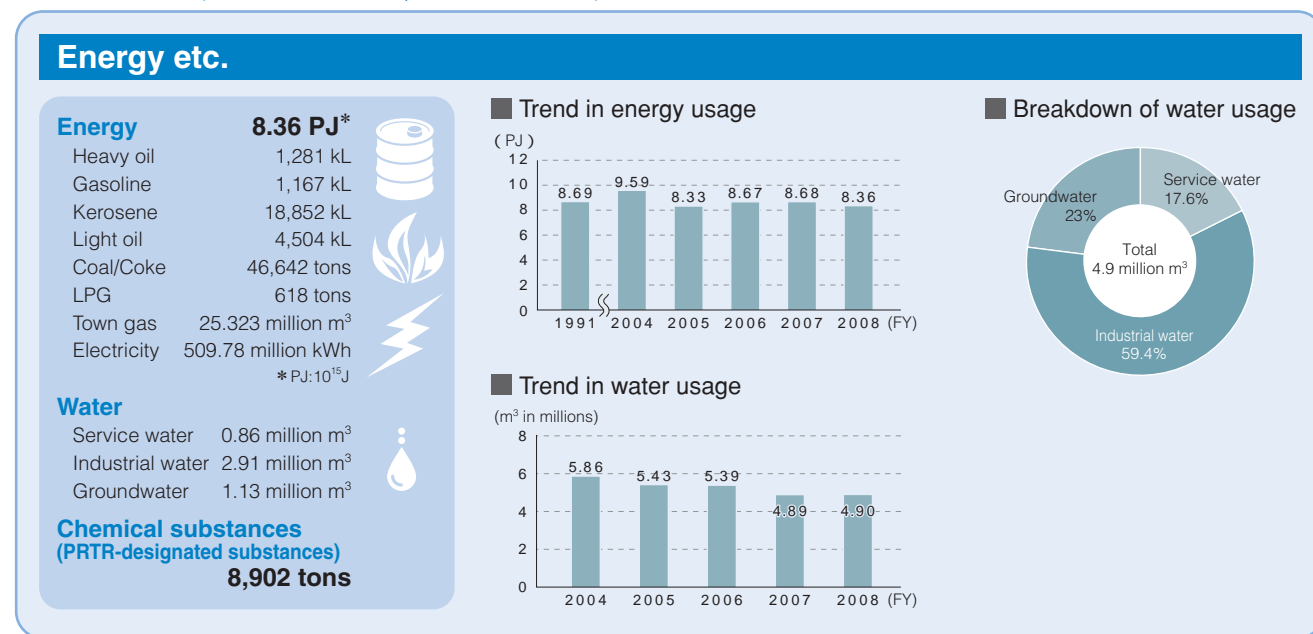


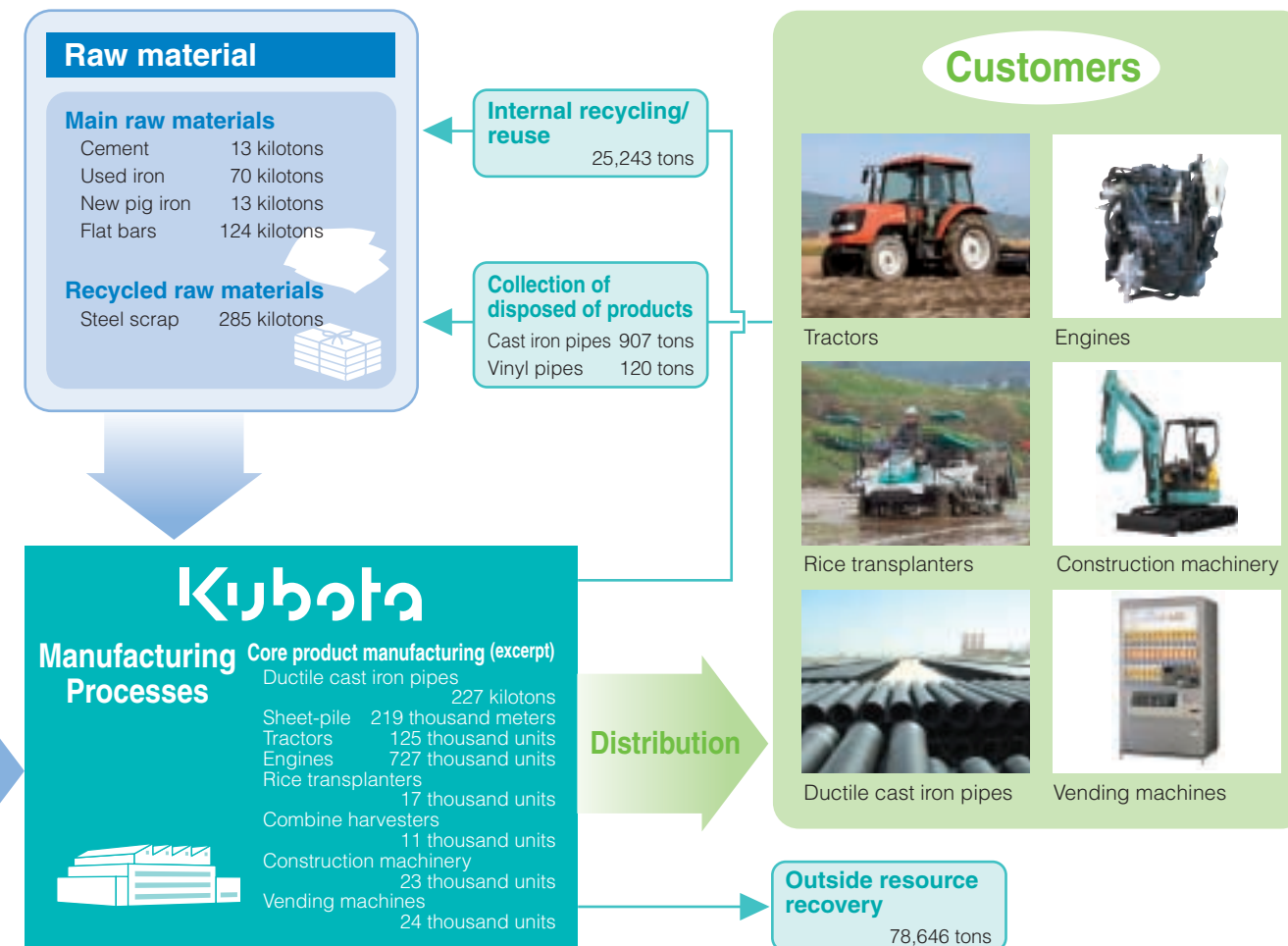
KUBOTA Group Business Activities and Environmental Loads

The status of the environmental loads generated during the process of production in the Farm & Industrial Machinery Consolidated Division, and the Water, Environment and Infrastructure Consolidated Division, etc., as well as during business activities in plants and offices, etc., are as follows. The KUBOTA Group is working to clarify the amounts of items used in manufacturing processes (INPUT), such as raw materials and electric power, water, and fuels, and the volume of emission and discharge (OUTPUT) delivered to the environment, such as carbon dioxide (CO₂) and waste, and we are totally committed to reducing the environmental burden we generate.

INPUT (Data for domestic plants and offices)



INPUT (Data for domestic plants and offices)



OUTPUT (Data for domestic plants and offices)

